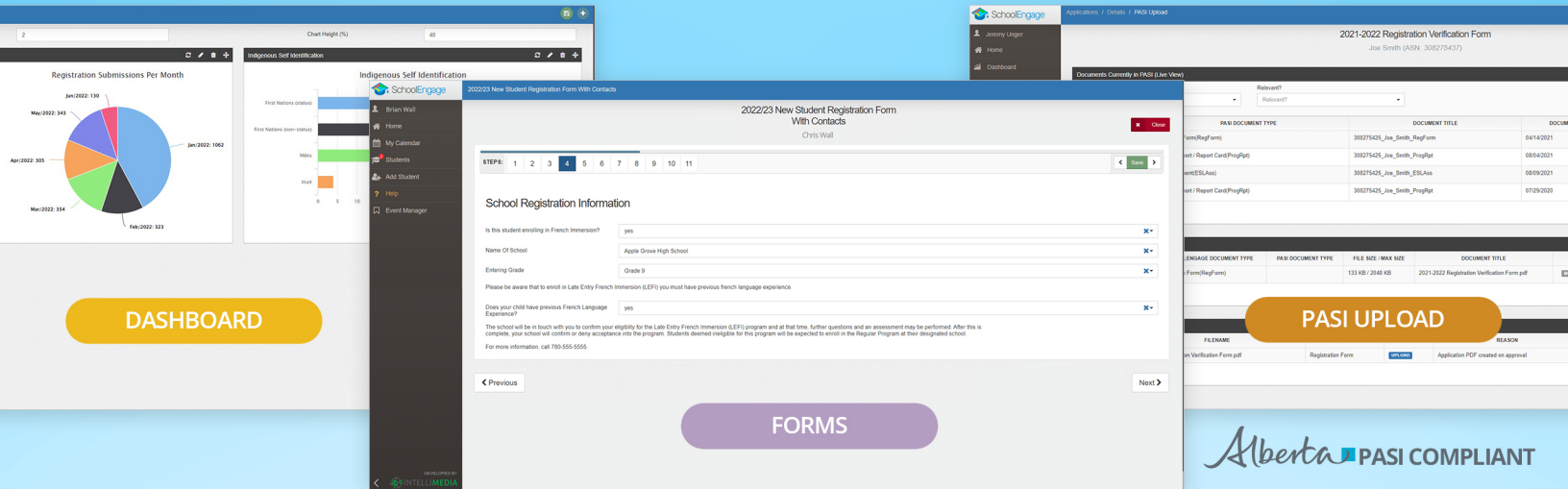




SchoolEngage

FORGET THE PAPER, FOCUS ON PROGRESS!

SchoolEngage is a comprehensive solution that facilitates interaction and communication, including exchange of information between key stakeholders within schools and school districts. Students, Parents, and multiple types of staff each have a unique account managed through a secure online interface, and integrated directly with the SIS, Identity Source or HR System.



Alberta PASI COMPLIANT

SchoolEngage enables schools and districts to publish forms to parents, students and staff that can be completed and submitted online. Upon approval, the data integrates seamlessly with the SIS platform, eliminating duplicate keying into multiple systems, improve data accuracy and reduces staff time in managing forms.

FORM USE CASES IN SCHOOL DISTRICTS



SURVEYS



ANNUAL AUTHORIZATIONS OR CONSENTS



REGISTRATIONS



STUDENT INTENT FORMS



TRANSPORTATION



ENGAGEMENT FORMS



FIELD TRIP



SCHOOL TRANSFER FORMS



STUDENT DEMOGRAPHICS OR RE-ENROLMENT

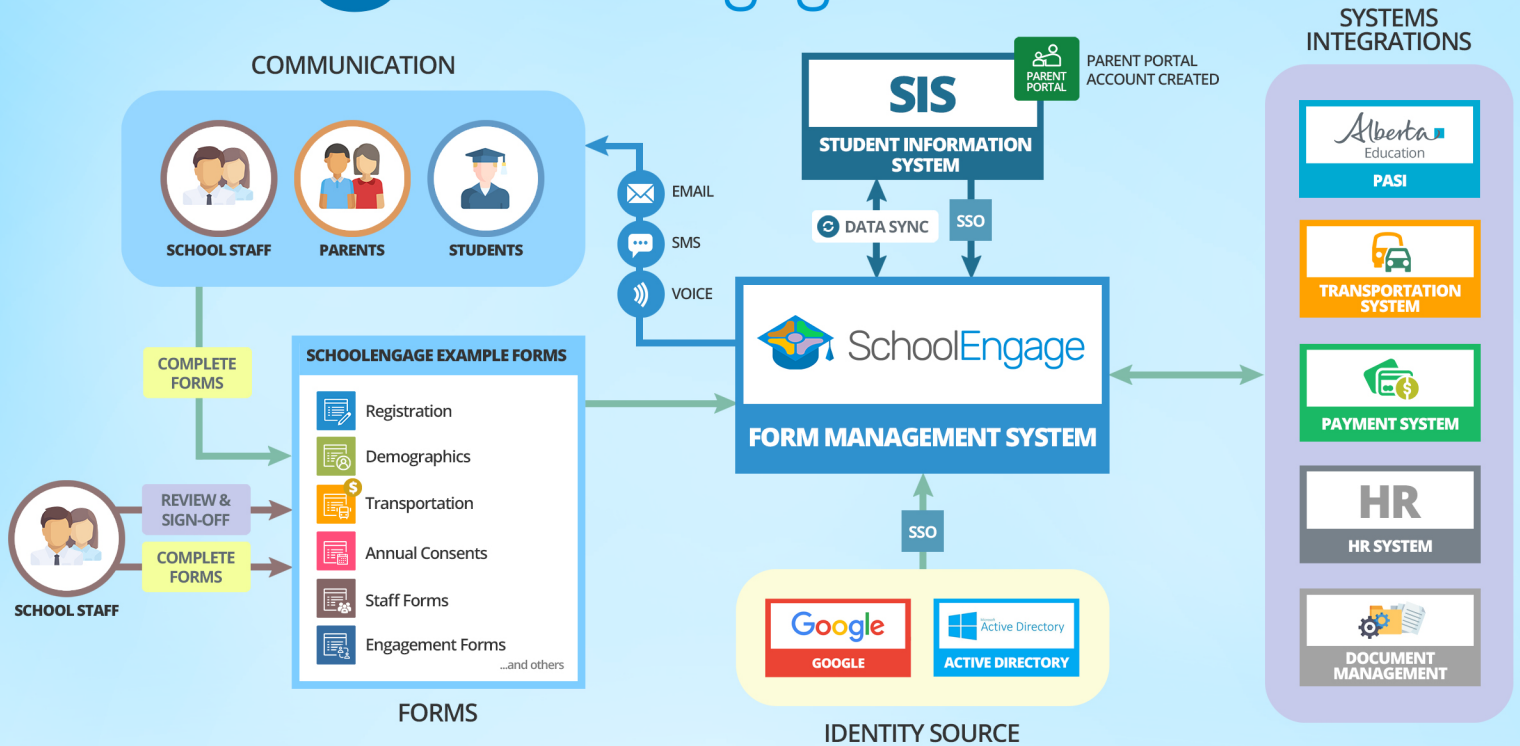


STAFF EVALUATION

Joanne Pitman Superintendent, School Improvement, Calgary Board of Education

Intellimedia has been a responsive partner in developing the forms we have needed using their SchoolEngage product. We have implemented a set of registration forms that fits a myriad of regular and alternative school programs. Their development team was able to bring a level sophistication in how address boundaries worked for our 250+ schools. We now see a level of uniform data within our Student Information System that we didn't have before partnering with Intellimedia.

SchoolEngage FORM SYSTEM



Scott Mahan Director of Technology, Rocky View Schools

SchoolEngage is a highly valued product at Rocky View Schools, backed by great service from Intellimedia. The product allows RVS to create a variety of forms, collect critical information, digital documents and digital signatures while streamlining and simplifying the registration, demographic and annual authorization process for parent. Intellimedia is highly responsive to input and feedback, enhancing and refining the product to meet the needs of the school division.

FEATURES

- DATA VISUALIZATIONS (CHARTS, GRAPHS, TABLES)
- STUDENT DATA REPORTING & EXPORT
- FLEXIBLE FORM CREATION AND DESIGN
- DYNAMIC FORM-INTEGRATED PAYMENTS
- EFFICIENT FORM REVIEW PROCESSES
- STUDENT DOCUMENT GENERATION
- ADDRESS AND SCHOOL BOUNDARY VALIDATION
- COMMUNICATIONS (EMAIL, SMS, VOICE)
- ROLE AND ACCESS MANAGEMENT
- STAFF AND FORMS WORKFLOWS

INTEGRATIONS

- SIS INTEGRATION
 - SINGLE SIGN ON (SSO)
 - DATA PULL AND PUSH
 - STUDENT ENROLLMENT
 - UNLIMITED CONTACTS INTEGRATION
 - STUDENT MATCHING
 - AUTOMATED PARENT PORTAL CREATION
- PASI INTEGRATION
 - DOCUMENT UPLOADS
 - VIEWING STUDENT RECORD DOCUMENT LIST
- HR INTEGRATION
- PAYMENTS PROCESSING
- INTEGRATION WITH OTHER SYSTEMS

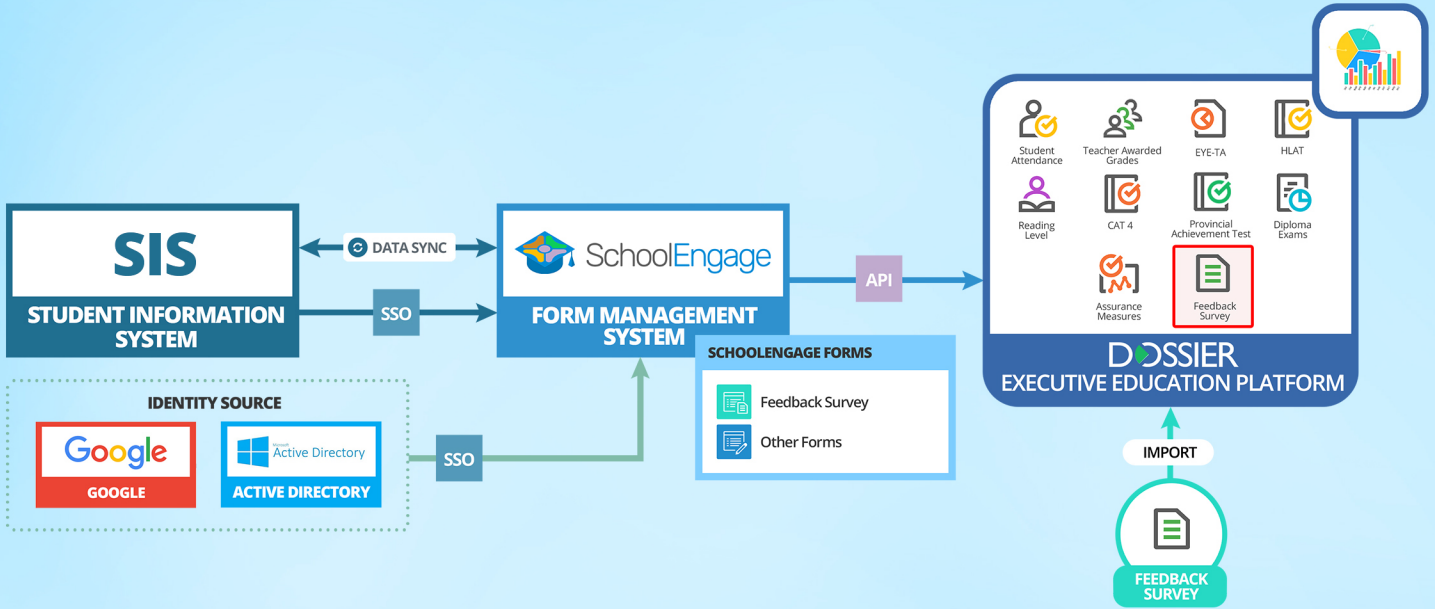


Dr. Scott Morrison Superintendent, Christ The Redeemer Catholic Schools

School Engage has saved our division hundreds of hours through the use of both their online registration solution and their online demographic update solution. The company is nimble, competent, and responsive.



SchoolEngage FORM MANAGEMENT



Brian Wildcat Superintendent, Maskwacis Education School Commission

SchoolEngage forms assisted us in reaching out to parent, collecting key student and registration information. SchoolEngage plays a key role in the field trip workflow process to get administration approval before it is published to parents. Intellimedia has been a strong partner over the years to support our school system data needs.



Advanced Technology Centre, Suite 111, 9650-20 Avenue,
Edmonton, Alberta, Canada, T6N 1G1

Phone: (780) 463 0754
Web: www.intellimedia.ca